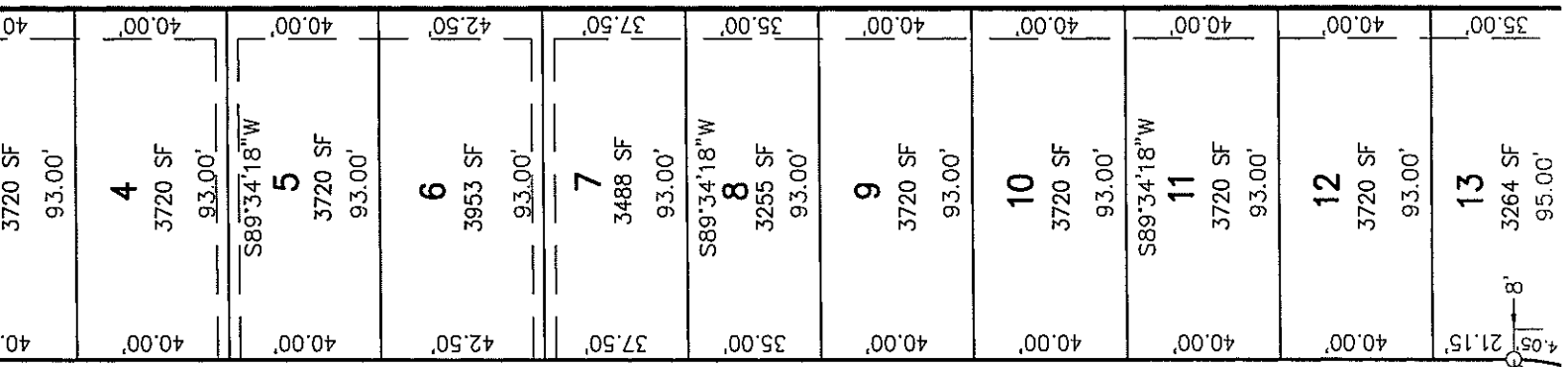




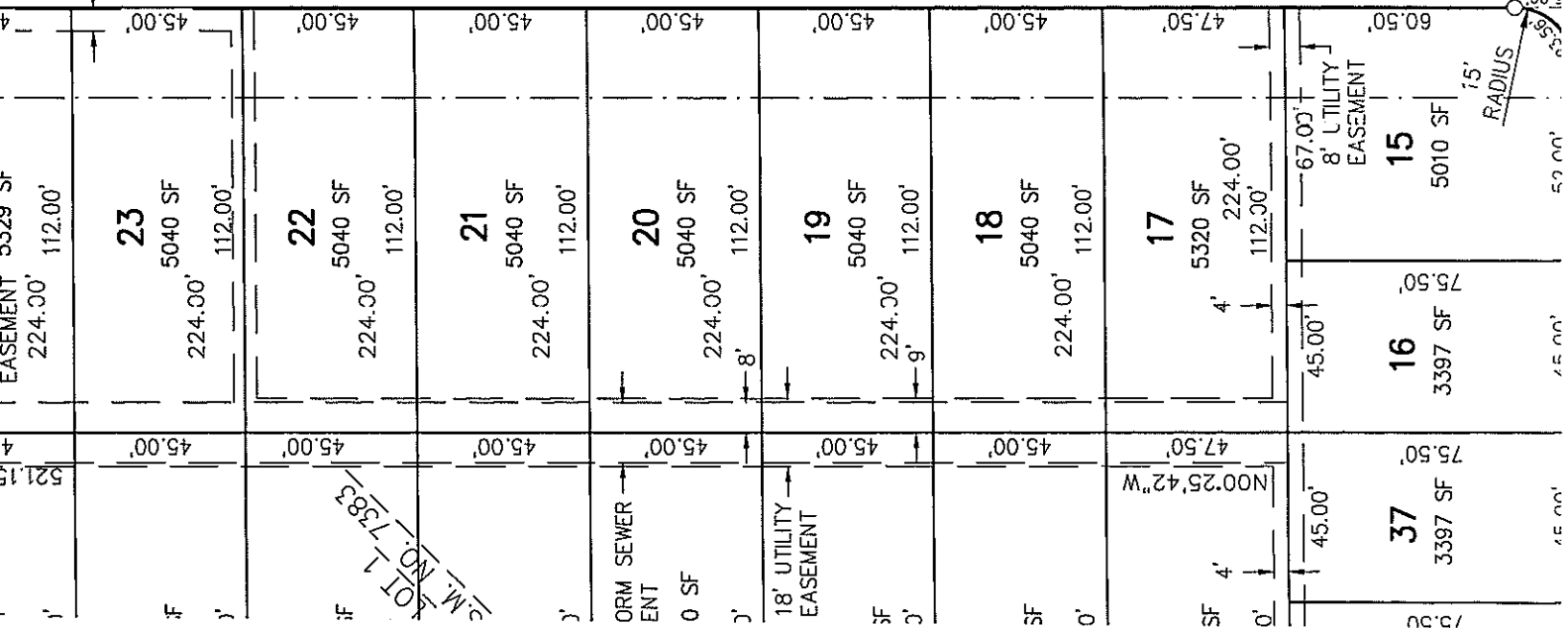
ASSESSOR'S MAP OF THE
VILLAGE OF KIMBERLY
BLOCK 54

CURVE	RADIUS	DELT.
C1	49.00'	90°
C2	49.00'	90°
LOT 13	49.00'	16°
LOT 14	49.00'	73°

RED CEDAR PARKWAY
DEDICATED BY GSM 7383
S00'25'42"E



OSHKOSH WAY
DEDICATED TO THE PUBLIC
S00'25'42"E



LOT 17383
M. NO. 7383

possible, to the condition existing prior to such entry by the Grantees or their agents. This restoration, however, does not apply to the initial installation of said underground and/or above ground electric facilities, natural gas facilities, or telephone and cable TV facilities or to any trees, brush or roots which may be removed at any time pursuant to the rights herein granted. Structures shall not be placed over Grantees' facilities or in, upon or over the property within the lines marked "Utility Easement Areas" without the prior written consent of Grantees. After installation of any such facilities, the grade of the subdivided property shall not be altered by more than four inches without written consent of grantees.

The Grant of easement shall be binding upon and inure to the benefit of the heirs, successors and assigns of all parties hereto.

— NO UTILITY BOXES OR PEDESTALS ARE TO BE SET WITHIN 1 FOOT OF ANY PROPERTY CORNER.

